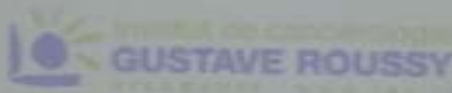






Centre for Integrative Translational Research



UNIVERSITÉ
PARIS-SUD 11

Modeling the multiscale functionality of the (mammalian) kidney

UTC

26 March 2013

S. Randall Thomas, PhD

IR4M UMR8081 CNRS

(Imagerie par Résonance Magnétique Médicale et Multi-Modalités)

Dir. : L. Darrasse, Dir. Adj. : N. Lassau

Orsay et Villejuif



ANR

Kidneys maintain water balance (by definition...)

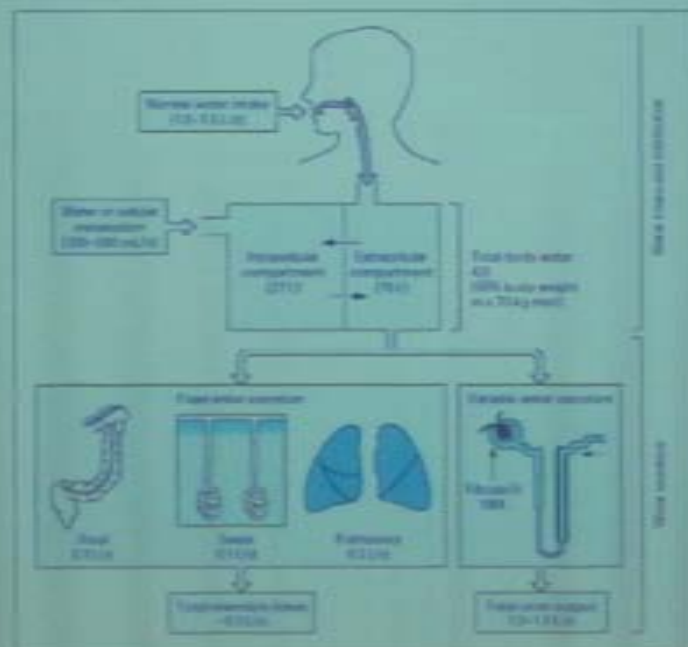


Fig. 1.1 from: **Atlas of Diseases of the Kidney** (Series Editor: Robert Schrier)
 VOLUME ONE (Edited by Tomas Bert and Joseph V. Bonventre)
 SECTION I: DISORDERS OF WATER, ELECTROLYTES, AND ACID-BASE
 Chapter 1. Diseases of Water Metabolism (Sumit Kumar & Tomas Bert)

















